

REVUE DES MARCHÉS

Marchés obligataires

	en %		en pb		
	28-mars-25	1 semaine	1 mois	Cumul annuel	1 an
Bund 2a	2.03	-9.9	-2.2	-2.6	-91.6
Bund 5a	2.29	-7.7	+15.2	+17.4	-6.1
Bund 10a	2.70	-3.6	+31.5	+33.8	+42.8
OAT 10a	3.27	-2.6	+25.5	+14.4	+46.6
BTP 10a	3.66	-3.5	+29.3	+23.9	-1.8
BONO 10a	3.26	-4.6	+25.8	+24.1	+10.8
Treasuries 2a	3.96	-1.2	-4.9	-28.8	-73.4
Treasuries 5a	3.98	-3.1	-3.2	-40.0	-25.2
Treasuries 10a	4.26	+0.8	+5.7	-31.7	+5.1
Gilt 2a	4.20	-6.3	+0.9	+5.3	-29.9
Treasuries 5a	4.31	-4.4	+14.7	-4.2	+52.9
Gilt 10a	4.70	-1.3	+18.1	+12.5	+76.1

Taux de change - Matières premières

	en niveau		variation, %		
	28-mars-25	1 semaine	1 mois	Cumul annuel	1 an
EUR/USD	1.08	+0.1	+4.1	+4.5	+0.2
GBP/USD	1.29	+0.4	+2.8	+3.3	+2.4
USD/JPY	150.28	+0.9	-0.3	-4.4	-0.7
DXY	111.99	+7.9	+11.5	+10.5	+6.1
EUR/GBP	0.84	-0.2	+1.3	+1.1	-2.2
EUR/CHF	0.95	-0.2	+1.6	+1.6	-2.0
EUR/JPY	162.64	+1.0	+3.8	-0.1	-0.5
Pétrole (Brent, \$)	73.54	+1.9	-0.0	-1.6	-15.9
Or (once, \$)	3084	+2.3	+8.2	+17.5	+39.3

Indices actions

	en niveau		variation, %		
	28-mars-25	1 semaine	1 mois	Cumul annuel	1 an
Monde					
MSCI Monde (\$)	3635	-1.5	-4.5	-2.0	+5.8
Amérique du Nord					
S&P500	5581	-1.5	-6.3	-5.1	+6.2
Dow Jones	41584	-1.0	-5.1	-2.3	+4.5
Nasdaq composite	17323	-2.6	-8.1	-10.3	+5.8
Europe					
CAC 40	7916	-1.6	-2.4	+7.3	-3.5
DAX 30	22462	-1.9	-0.4	+12.8	+21.5
EuroStoxx50	5331	-1.7	-2.4	+8.9	+4.9
FTSE100	8659	+0.1	-1.7	+5.9	+8.9
Asie					
MSCI loc.	1417	-1.0	+1.2	-1.1	+1.6
Nikkei	37120	-1.5	-0.1	-7.0	-7.6
Emergents					
MSCI Emergents (\$)	1121	-0.9	+2.1	+4.1	+7.7
Chine	75	-1.0	+3.5	+16.4	+38.6
Inde	992	+0.9	+9.4	-3.5	+1.6
Brazil	1331	-2.3	+6.5	+13.2	-19.1

Performance par secteur

Eurostoxx600

Année 2025 au 28-3, €

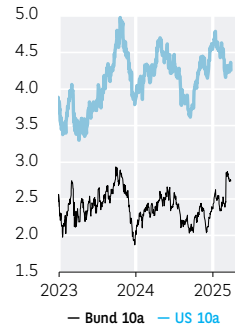
+23.8%	Banques
+16.9%	Assurances
+12.7%	Télécoms
+9.9%	Scs collectivités
+9.9%	Construction
+9.9%	Pétrole & gaz
+8.4%	Industrie
+7.6%	Agroalimentaire
+6.8%	Eurostoxx600
+5.9%	Scs financiers
+4.5%	Chimie
+1.2%	Santé
-1.2%	Technologie
-1.2%	Foncières
-1.3%	Matières premières
-2.0%	Bs. de conso.
-2.9%	Médias
-3.6%	Distribution
-11.3%	Voyages & loisirs

S&P500

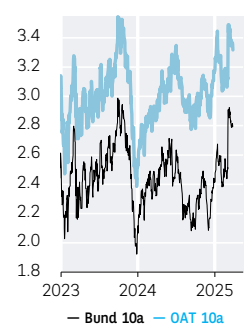
Année 2025 au 28-3, \$

+18.5%	Télécoms
+9.8%	Assurances
+8.5%	Alimentation, boissons et tabac
+8.1%	Énergie
+6.6%	Santé
+4.7%	Services commerciaux et pro.
+4.0%	Pharmaceutiques
+3.9%	Foncières
+3.0%	Scs collectivités
+1.2%	Matériaux
-1.9%	Biens d'équipement
-2.4%	Banque
-2.6%	Distribution
-4.3%	Services aux consommateurs
-5.1%	S&P500
-9.2%	Médias
-9.4%	Biens de consommation
-12.0%	Matériel et équipement technologiques
-17.0%	Semiconducteurs
-32.1%	Automobiles

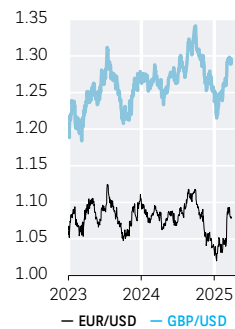
Bund 10a vs US Treas. 10a



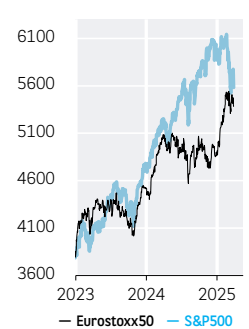
Bund 10a vs OAT 10a



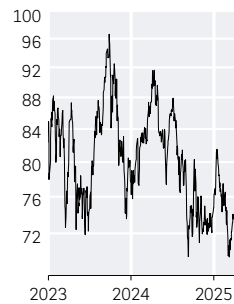
EUR/USD vs GBP/USD



EUROSTOXX 50 vs S&P500



Pétrole (Brent, \$)



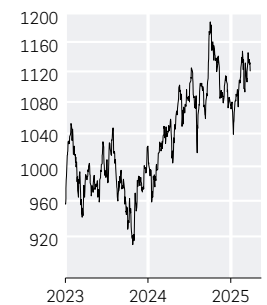
Or (once, \$)



MSCI monde (\$)



MSCI Emergents (\$)



SOURCES : LSEG, BLOOMBERG, BNP PARIBAS
DATAVISUALISATION ET CARTOGRAPHIE : TARIK RHARRAB

